

Review of Global Collecting Centres Operations

Elanor Gowland
UK Met Office
ETMC-I

Overview

- Current procedure for processing data
- Recent activities
- Problems encountered
- Possible solutions
- Discussion

Current GCC status

- 41 Contributing Members
- Around 40% submit data
- 2 Global Collecting Centres (Germany & UK)
- Process > 1 million observations a year
- 8 Responsible Members
- Receive data from GCCs quarterly

Delayed mode data flow

DE, HK, IN, JP,
NL, RU, UK, US

RMs

MQCS

GCC

PMO



S

Email, log,
disk

CM



Problem – delayed mode

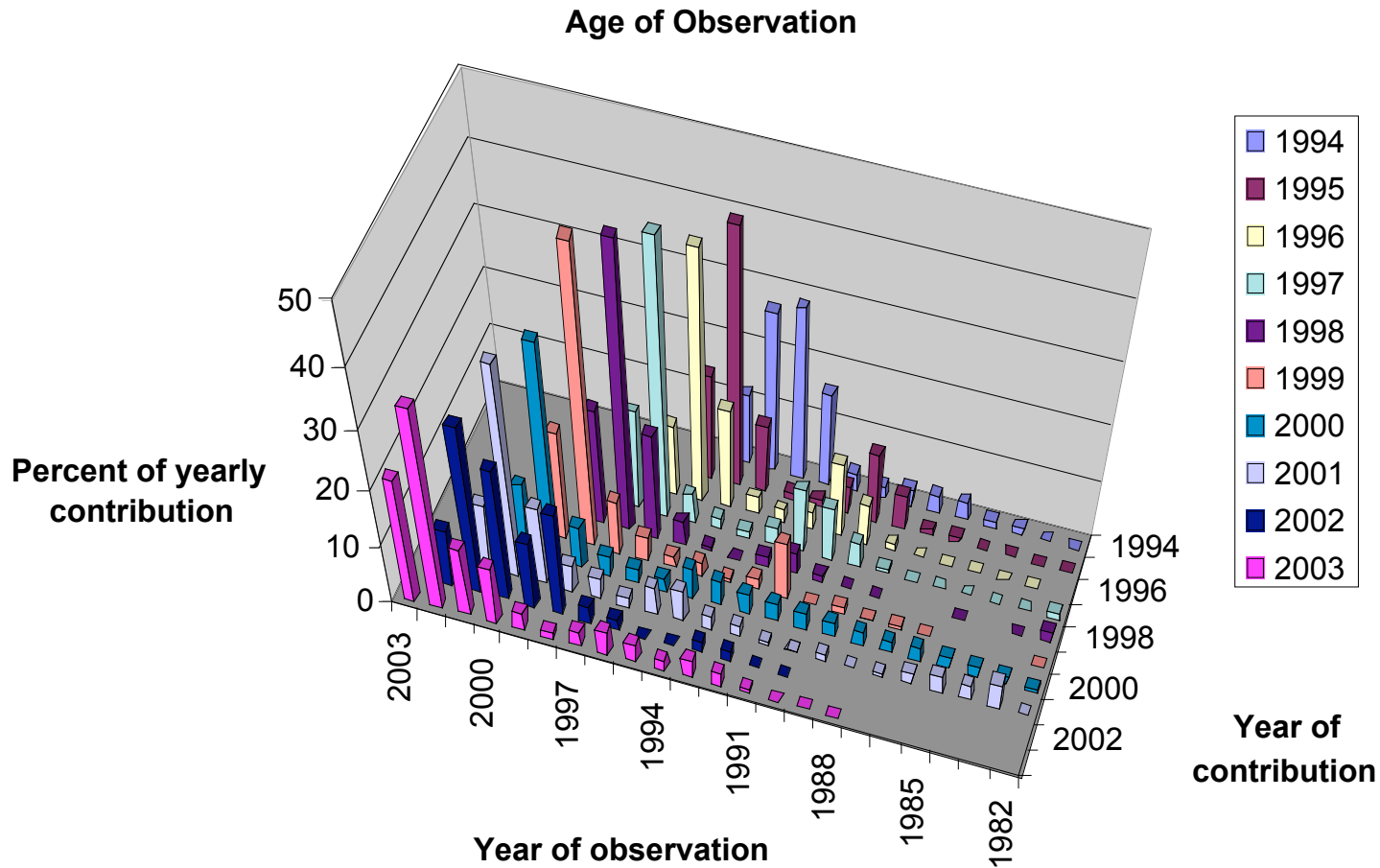
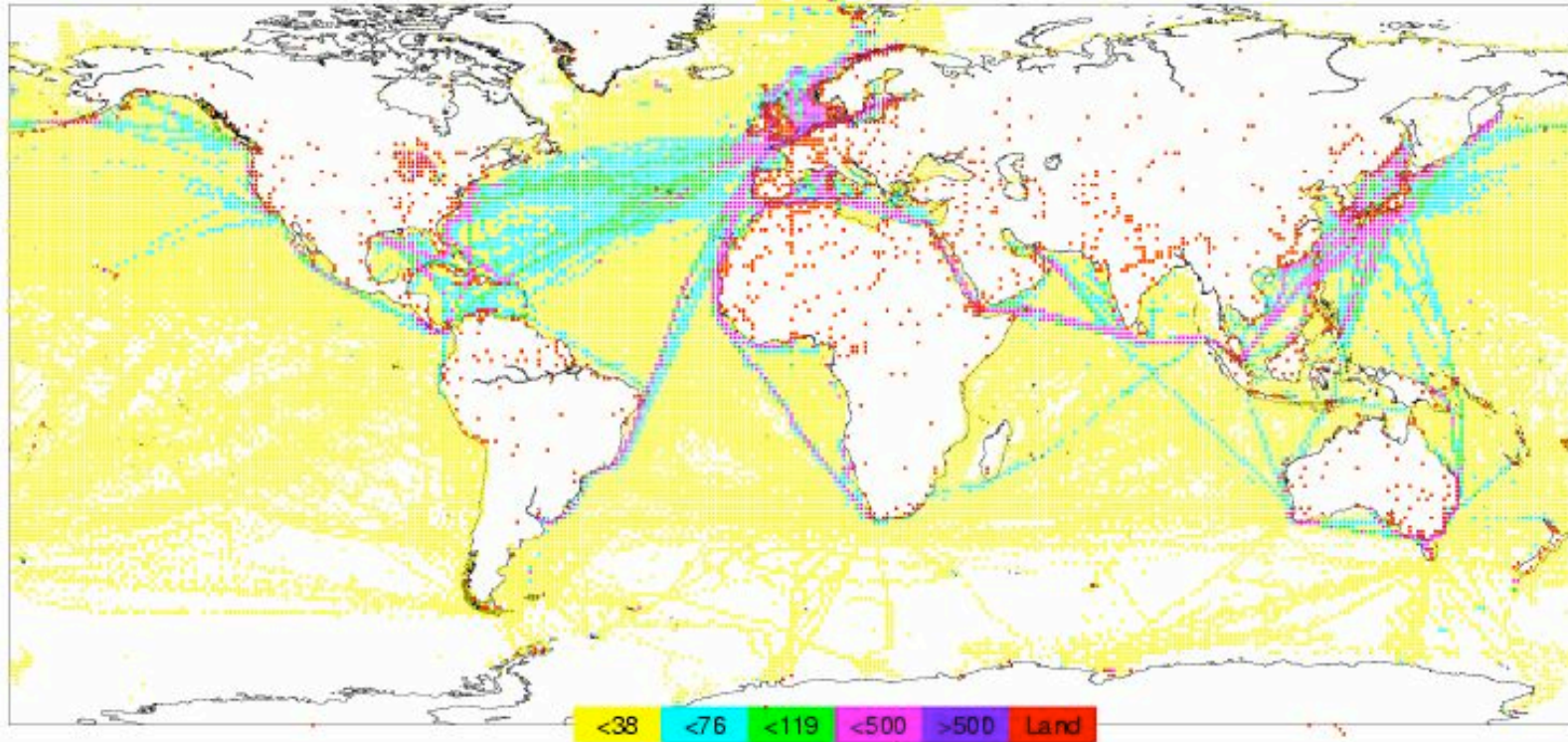


Diagram from DWD

Problem – on land



Area distribution

Total number of observations (1078515) received in 2003

Diagram from DWD

Problem – missing elements

Elements reported "blank"

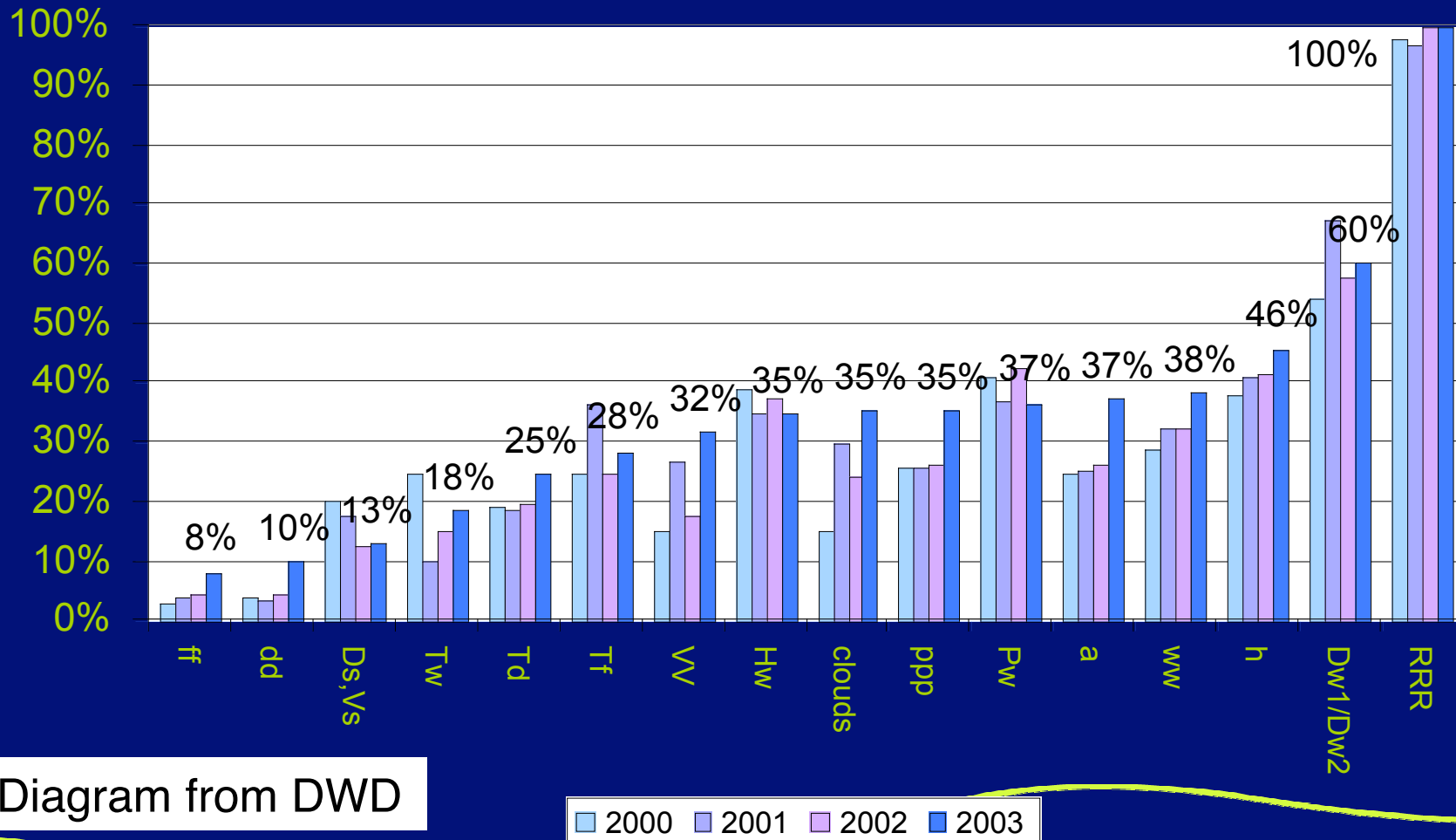
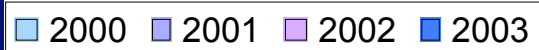


Diagram from DWD



Recent GCC activities

- VOSCLim in operational phase
- Updated format, IMMT-2
- Recommendations for extra MQC (Item 3.1)

- MQC software for CMs
- Issued April 2002, requested by 19 countries
- 1st update in 2003

The future...

Please consider:

End-to-end data management, of the current
Marine Climatological Summaries Scheme

- Metadata
- Data management

Metadata

- Pub. 47 stored separately to VOF data

Problem

- Pub. 47 not yet on line

Improvements

- IMMT-3 contains VOSCLim elements and QC
- Developing XML, new data transmission, few limitations

Data management

- GCCs are focal point. Ensure MQCS
- Most RMs store all data, not just area of responsibility

Problem

- 8 versions of same original observation (plus GTS)

Possible solutions

- Distributed data system
- Official global data store with agreed HQC
- Unique data tagging

Summary

- GCCs current process works well
- More QC by CMs = better quality data
- VOSCLim project → IMMT-3 and MQCS-V
- Liaison with ETDMP in Pilot projects
- JCOMM-2