

**Servicio Meteorológico de la Armada
Argentina**

Report

Contributing Member

Cristina E. Rössler

*First session of the JCOMM Expert Team on Marine Climatology
(Gdynia, Poland) July 2004*

Activities

- **Argentina's contribution to the MCSS started in 2001**
- **Consisted in observations period 1950-2001**
- **The MQC was applied and the data were in the required IMMT format**
- **In 2002 didn't receive any data (pub WMO No. 47 was not update)**

- **Since January 2003 Argentina is sending the data quarterly.**
- **A high percentage of data now comes through GTS**
- **There is still a considerable amount of data coming from meteorological logbooks that require digitalisation**

Data processing

- The following comments can be made:
 - The first dispatching was in the required IMMT-1 format.
 - The MQC standard have been applied
 - Since 2003 they have been in IMMT-2 format.
 - Data have been exchanged by e-mail.
 - The list of the recruited ship in the WMO No. 47 was update, this was helpfully.

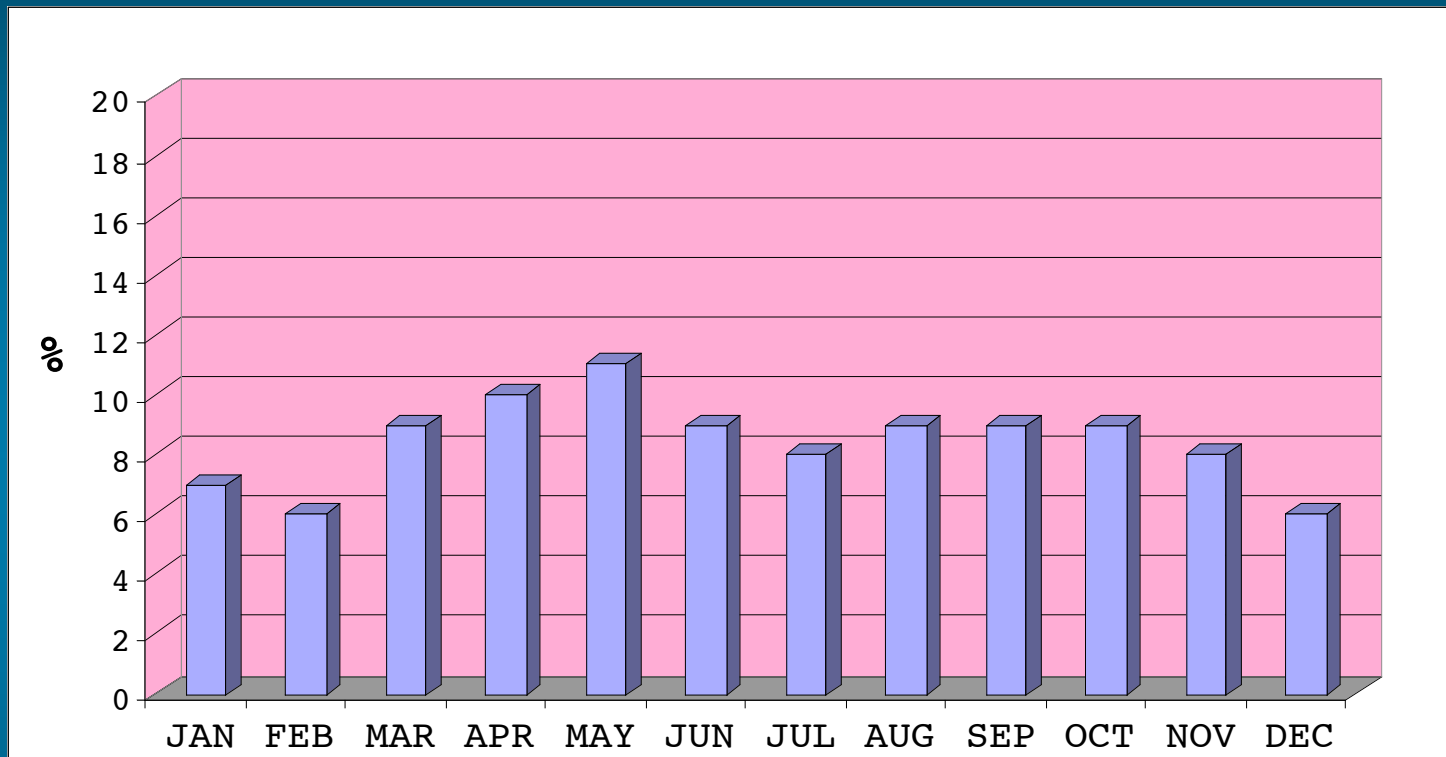
Quality control software

- SMARA developed a Quality Control software (SIMAR) which apply to other kinds of advanced quality control, based in:
 - WMO MQCs version 4 (Rec. 9, JCOMM-1)
 - KNMI - KN-89-01
 - Quality Control Procedures of the National Ice Center for ice observations
- SMARA developed a Quality Control Software Automatic System (QCSHIP)
 - Provides immediate minimum quality checks right after composition of the observation.
 - Only one ship is using this software (Since 1999)

Distributions per period

- The first contribution in 2001 consisted:
 - 2239 observations
 - period 1950-2001
- Since 2003 the contribution is quarterly
 - 436 observations in 2003
 - 329 in 2004 till now

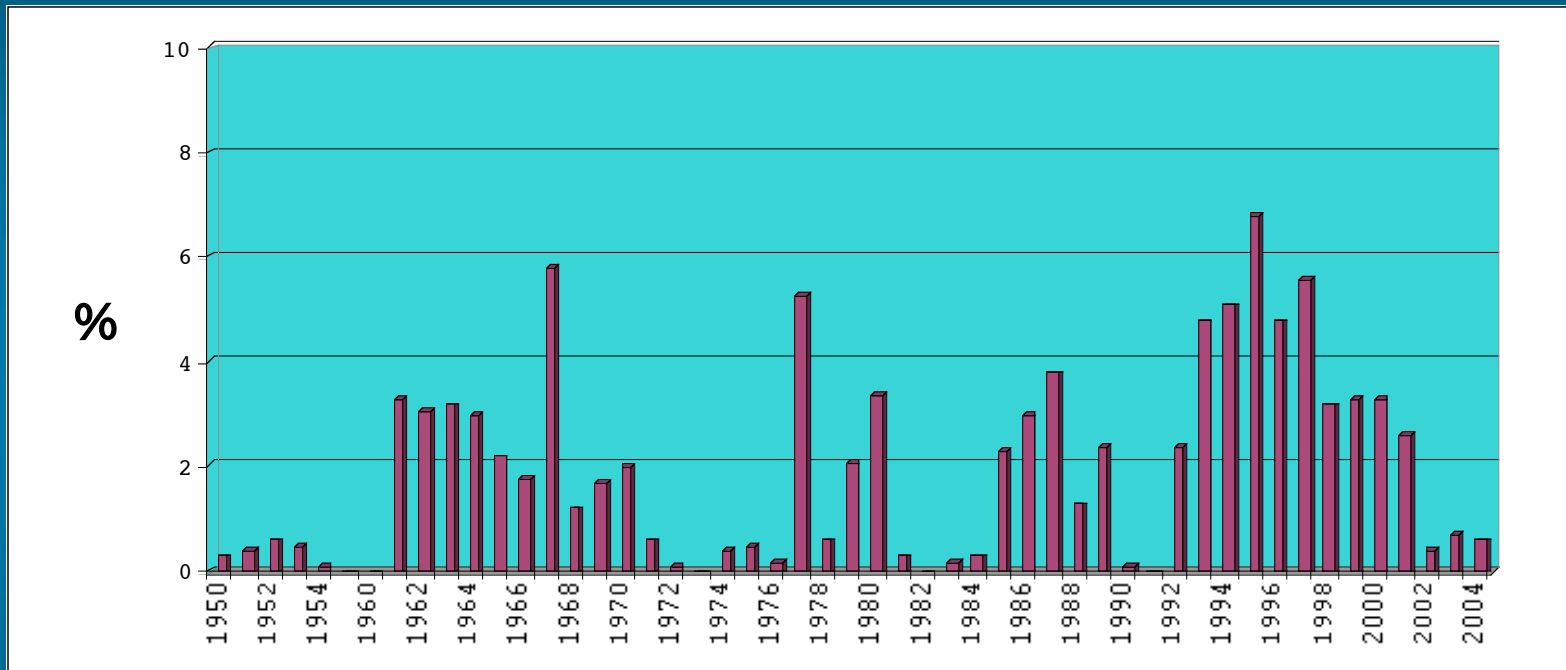
Contributions per month



- The amount of data received per month varied greatly

- More completed data are observed in April and May

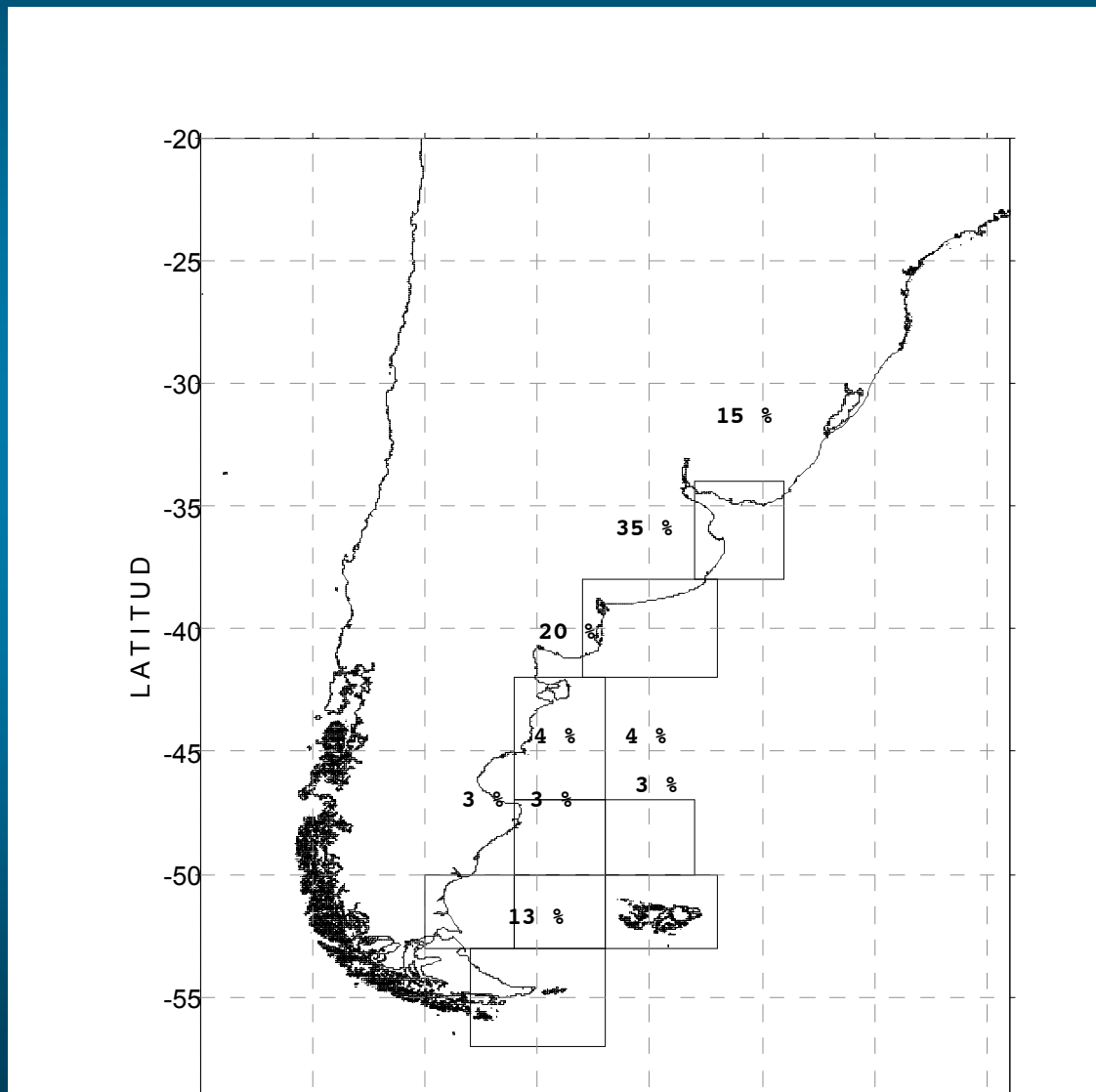
Contributions per year



•data originating from as early as 1960.

•About 50% was not older than 1994

Spatial distribution near the coast



- Amount data varied greatly spatially

- Data concentrated near the principal Argentina's harbours

Considerations

- **Communication with PMO is a very critical issue, making CM's work easier**
- **The WMO Publication No. 47 has not been updated regularly, causing frustration at the CM.**
- **A substantial number of JCOMM-related publications are available through the JCOMM web page. All those technical publications had provided very valuable support to this CM in implementing their marine related activities.**
- **The WMO Publications related with the Marine meteorology activities should be sent to the Marine Meteorological Services directly to facilitate the work.**

Summary

- **Argentina started its contribution to the Marine Climatological Summaries Scheme (MCSS) in 2001**
- **Minimum quality controls (MQC) have been applied. International Marine Meteorological Tape (IMMT) formats have been used for delay-mode collection and storing of observation results.**
- **All Marine climatological digitized data have been submitted directly to Global Collecting Centres (GCCs) on a four-month basis**